





IP66



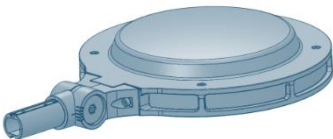


RoHS

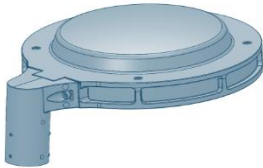
220-240V 50-60Hz

	IK		SCx	Hmax
TEO 45	09	8,6 kg	0,038 m ²	12m
TEO 55	08	10,7kg	0,042 m ²	

LRL



TOP



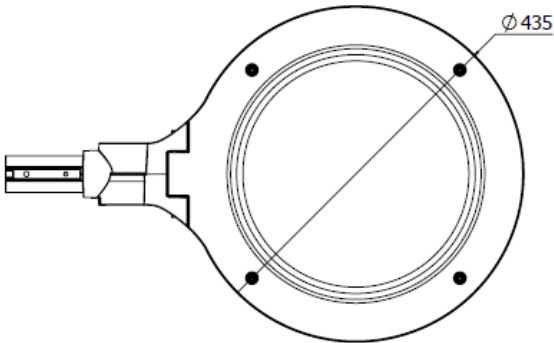
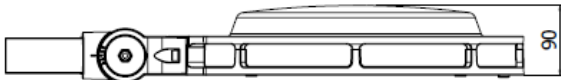
LR



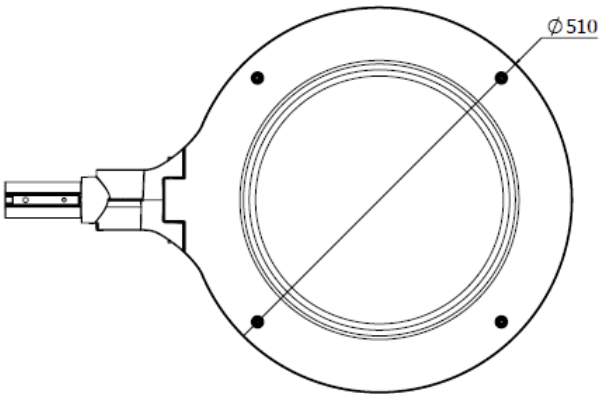
LRM60



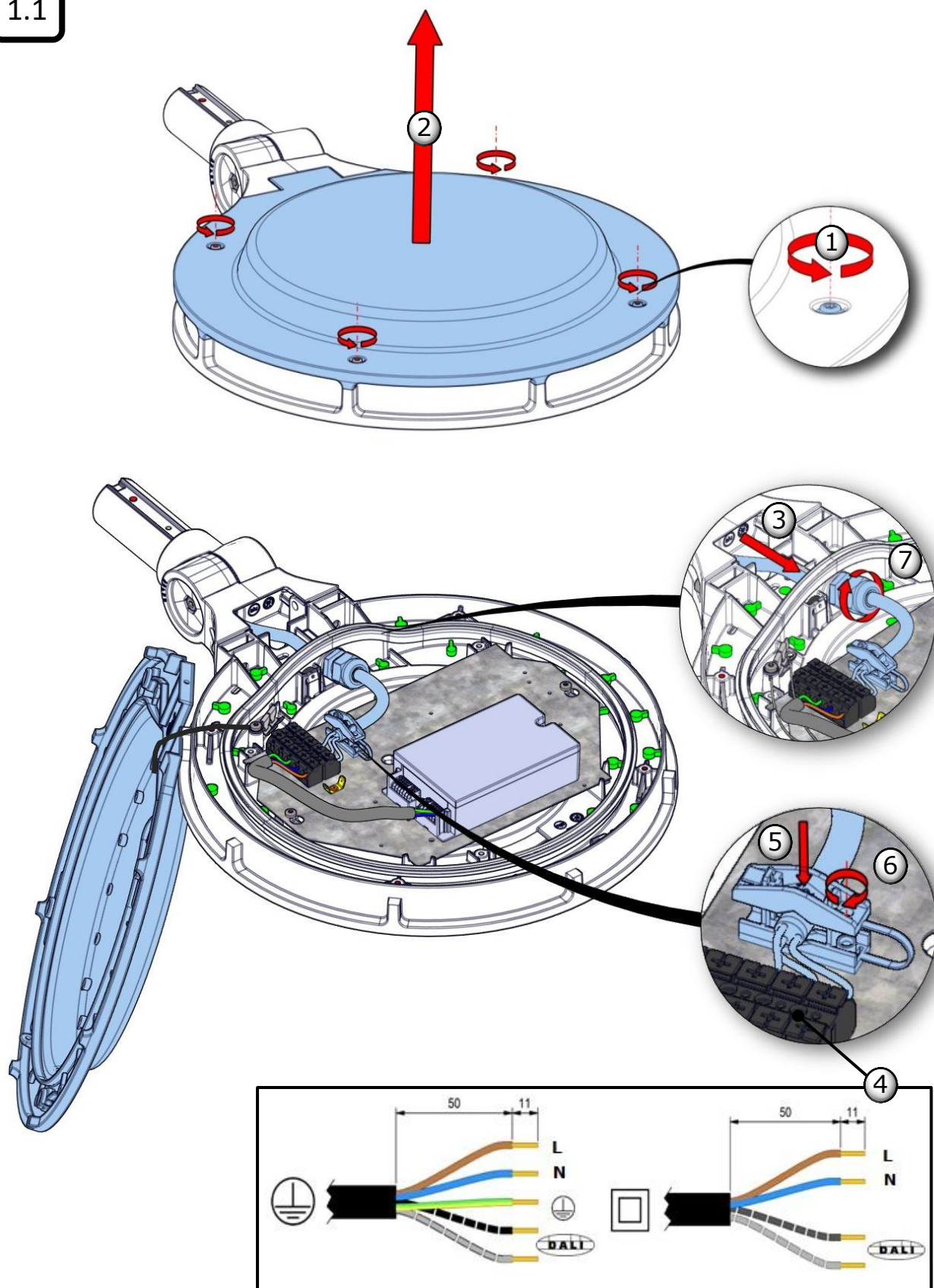
TEO 45 S



TEO 55 S

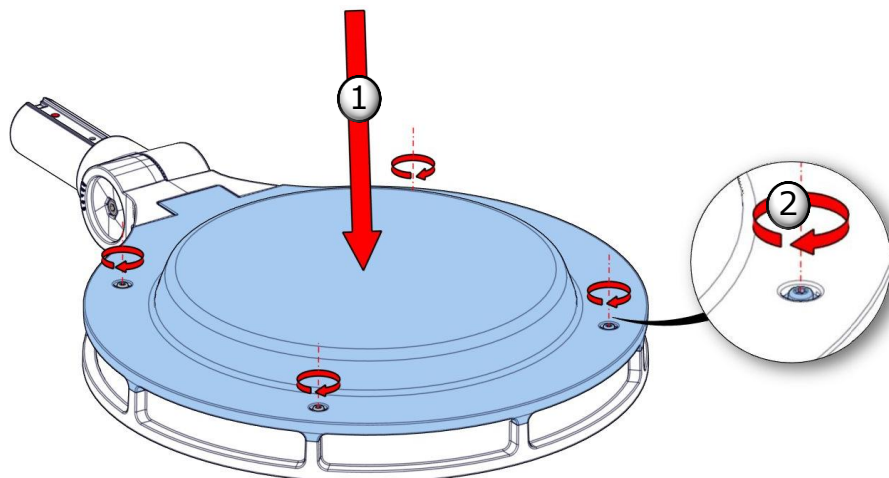


1.1



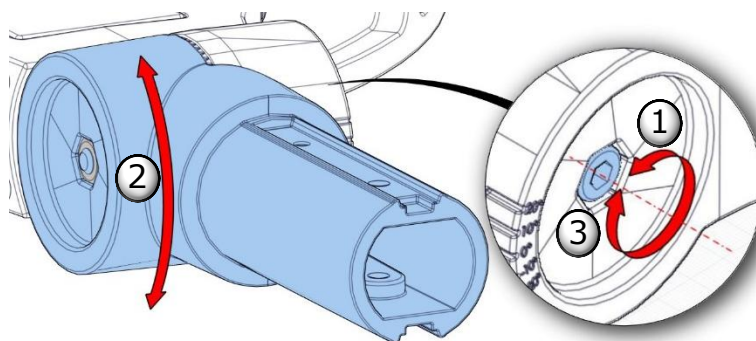
La source lumineuse contenue dans ce luminaire ne doit être remplacée que par le fabricant ou son agent de maintenance ou une personne de qualification équivalente.
The lighting part included in this luminaire must be maintained by the manufacturer, an authorized service agent or a person with similar technical qualification.
Die in der Leuchte beinhaltene Lichtquelle soll nur durch den Hersteller oder seinen Wartungsfachmann oder einen Servicetechniker mit einer ähnlichen Qualifikation ersetzt werden.

1.2



1.3

6

12 N.m \pm 1

1.4

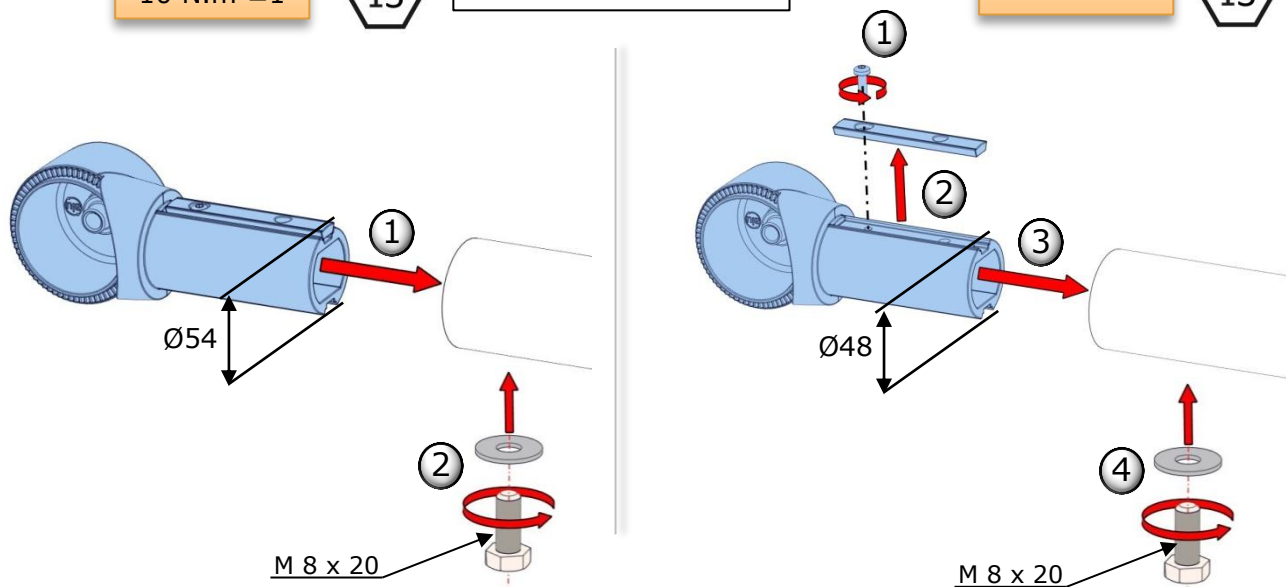
10 N.m \pm 1

13

LRL

10 N.m \pm 1

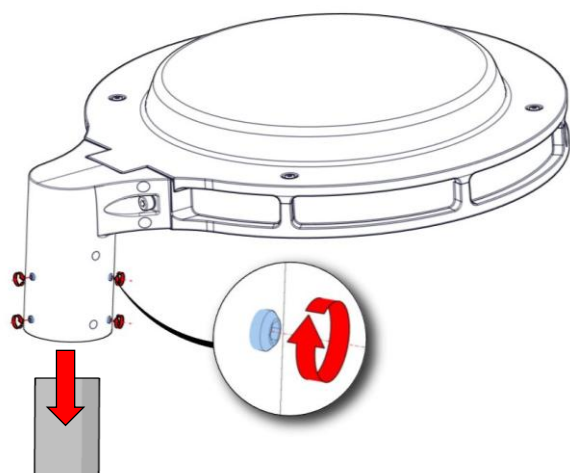
13



La source lumineuse contenue dans ce luminaire ne doit être remplacée que par le fabricant ou son agent de maintenance ou une personne de qualification équivalente.
 The lighting part included in this luminaire must be maintained by the manufacturer, an authorized service agent or a person with similar technical qualification.
 Die in der Leuchte beinhalten Lichtquelle soll nur durch den Hersteller oder seinen Wartungsfachmann oder einen Servicetechniker mit einer ähnlichen Qualifikation ersetzt werden.

1.5

TOP

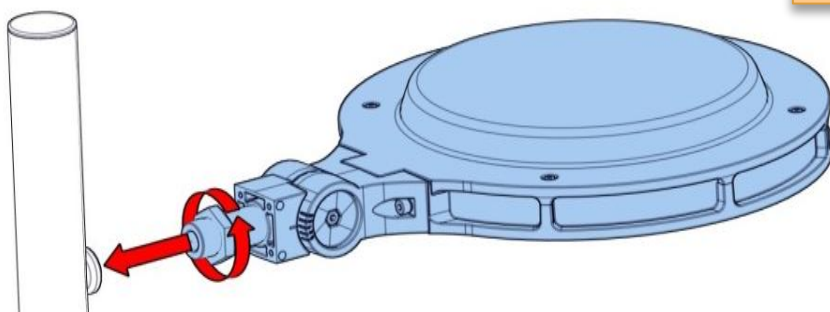
4N.m ± 1

6x

3

1.6

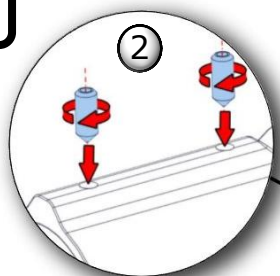
LR

50 N.m ± 1

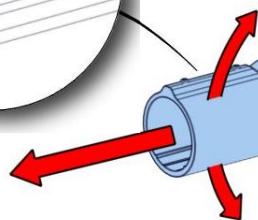
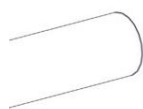
46

1.7

LRM 60



2

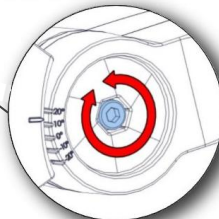


6

12 N.m ± 1

2x

4

12 N.m ± 1 

Autres notices et modes opératoires

La source lumineuse contenue dans ce luminaire ne doit être remplacée que par le fabricant ou son agent de maintenance ou une personne de qualification équivalente.
The lighting part included in this luminaire must be maintained by the manufacturer, an authorized service agent or a person with similar technical qualification.
Die in der Leuchte beinhaltene Lichtquelle soll nur durch den Hersteller oder seinen Wartungsfachmann oder einen Servicetechniker mit einer ähnlichen Qualifikation ersetzt werden.

4